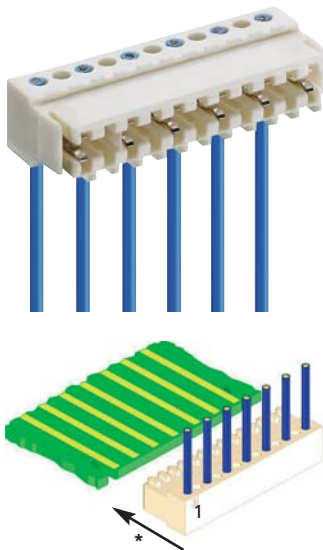
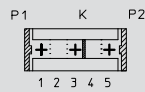


**Kodierungen für Duomodul-Steckverbinder 3513**  
**Keyings for Duomodul connector 3513**  
**Codages pour connecteurs Duomodul 3513**



**3513**

Für diesen Steckverbinder schlägt Lumberg die unten dargestellten Kodierungen vor. Weitere Kodierungen sind auf Anfrage möglich.



K Kodierung  
 P Positionierung

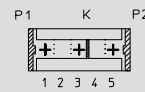
**Steckweise direkt**, auf den Leiterplattenrand:

Kodierung durch Kodierstege und geschlossene Seitenwände (Positionierung). Die Leiterplatte hat dazu passende Ausnehmungen

Alle Zeichnungen in Steckrichtung (\*) gesehen

**3513**

For this connector, Lumberg proposes the keyings listed below. Further keyings are possible on request.



K keying  
 P positioning

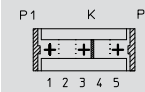
**Direct connection**, with the printed circuit board edge:

Keying by means of keying ribs and closed sides (positioning). The circuit board has matching reliefs

All drawings in view of mating direction (\*)

**3513**

Pour ce connecteur Lumberg propose les codages ci-dessous. Autres codages sont possibles sur demande.



K codage  
 P positionnement

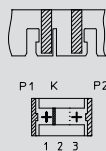
**Connexion directe**, avec le board de la carte imprimée:

Codage par cloisons de codage et parois latérales fermées (positionnement). La carte imprimée possède des fentes adéquates

Tous dessins vus dans le sens d'enfichage (\*)

**2**  
 2-polig  
 2 poles  
 2 pôles

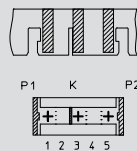
**3513 02 K06**



Kodierung/keying/codage:  
 K1/2 P1 P2

**3**  
 3-polig  
 3 poles  
 3 pôles

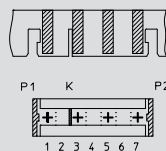
**3513 03 K19**



Kodierung/keying/codage:  
 K2/3 P1 P2

**4**  
 4-polig  
 4 poles  
 4 pôles

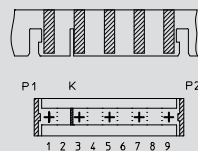
**3513 04 K10**



Kodierung/keying/codage:  
 K2/3 P1 P2

**5**  
 5-polig  
 5 poles  
 5 pôles

**3513 05 K13**

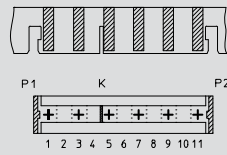


Kodierung/keying/codage:  
 K2/3 P1 P2

**6**

6-polig  
 6 poles  
 6 pôles

**3513 06 K07**

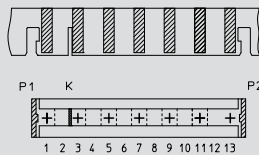


Kodierung/keying/codage:  
 K4/5 P1 P2

**7**

7-polig  
 7 poles  
 7 pôles

**3513 07 K13**

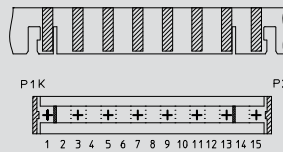


Kodierung/keying/codage:  
 K2/3 P1 P2

**8**

8-polig  
 8 poles  
 8 pôles

**3513 08 K07**

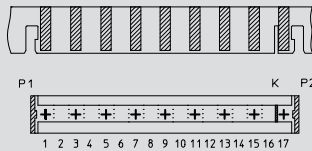


Kodierung/keying/codage:  
 K1/2 K13/14 P1 P2

**9**

9-polig  
 9 poles  
 9 pôles

**3513 09 K08**

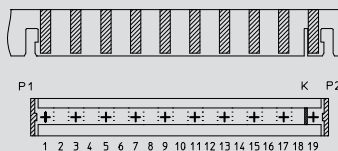


Kodierung/keying/codage:  
 K16/17 P1 P2

**10**

10-polig  
 10 poles  
 10 pôles

**3513 10 K06**



Kodierung/keying/codage:  
 K18/19 P1 P2